

Email to
 RichardGH@nswjcl.org.au

Or post to
 Richard Gastineau-Hills
 NSW Junior Chess League
 2 Northcote Avenue
 Killara NSW 2071

NSW Junior Chess League

COUNTRY SECONDARY SCHOOLS TEAMS COMPETITION

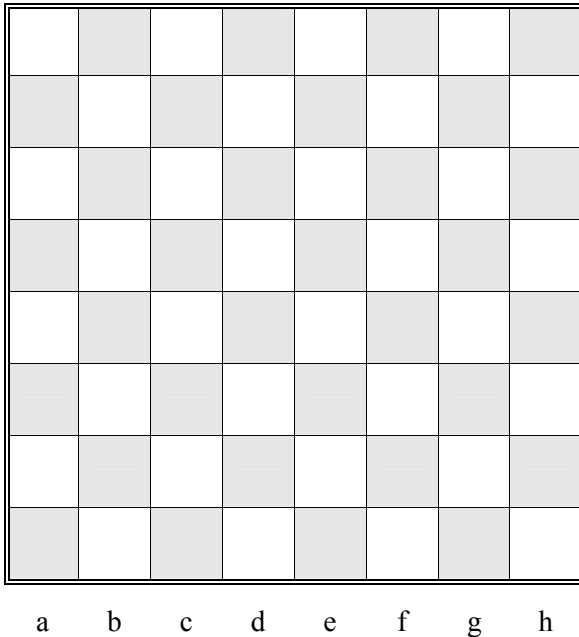
Position for Adjudication

FROM: SCHOOL

TEACHER or
 CHESS COORDINATOR

Round Board Number Date

Black side



White side

8 Note: If one player believes that his position is clearly losing, it is normal (and polite) practice to resign rather than submit the position for adjudication. However, no pressure should be applied to a player to resign.

7

6 **BLACK PLAYER**

5 **SCHOOL/TEAM**

4

3 **WHITE PLAYER**

2 **SCHOOL/TEAM**

1 *Tick one:* White to move Black to move

(White pieces move “up” the board)

Please circle the BLACK pieces

K=King; Q=Queen; R=Rook;
 B=Bishop; N=Knight; P=Pawn

Write clearly with a **STRONG** dark pen!

Summary of pieces on the board (e.g. K, 1R, 2N, 3P)

White: K,

Black: K,

Which player made the last move and what was it?

(Please circle) White/Black – move:

Is either king still eligible to castle? (Please circle)

White: yes/no – kingside/queenside

Black: yes/no – kingside/queenside

POSITION CHECKED BY:

..... FOR (HOME SCHOOL)

..... FOR (AWAY SCHOOL)